



COMPANY **BROCHURE**

2021

CONTACT US



+260 966 837539 | +260 977 837539



www.michlong.com



sales@michlong.com
info@michlong.com
michlonglimited@gmail.com



Post Office Building
Suite 110, Matuka Avenue
Kitwe - Zambia

Plot# 8 Gardenia Road Avondale
Off Great East Road, Lusaka

About Us

ABOUT US

Michlong Limited is a wholly Zambian owned Company based in Kitwe on the Copperbelt province and Lusaka in Lusaka Province of the Republic of Zambia. The Copperbelt is one of the major copper producing areas of the world, which is approximately 370 Kilometres North West of the Capital City of Lusaka. Copper mining highly supports the industrialization of the Copperbelt and all its business activities that range from trading, engineering and construction. Since its inception in 2008 Michlong Limited has been a local supplier and Contractor of electrical and instrumentation components, Civil and Mechanical Contractors. The Company has grown from strength to strength and is built on a legacy of excellent experience and commitment.

Our wealth of experience has enabled Michlong Limited to become a market leader and is the perfect choice for customer satisfaction. Our Consulting Engineer comes with more than 20 years' experience from the Copper Mining Industry. Michlong Limited is managed by a highly competent management team. The Company currently has 4 self-motivated and well trained management staff and a varied number of skilled and non-skilled staff.

Michlong Limited is positioning itself to penetrate the unlettered regions, particularly the industrial sector as well as to service international markets such as the Democratic Republic of Congo and Angola.

The company has since its inception been a quality provider of Electrical Equipment and Mechanical/Civil services to its customers:- Michlong Limited has the capacity to supply and Service a wide variety of electrical equipment to carry out Electrical Installations.



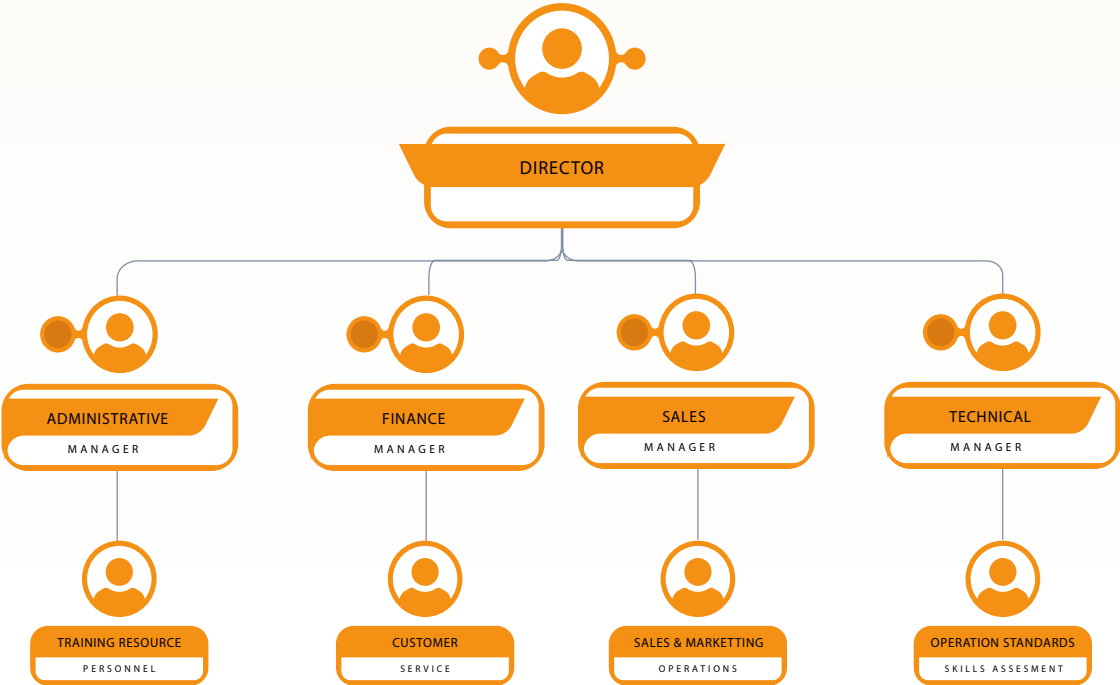
OUR SERVICE

- ▶ Power and Control cables
- ▶ Overhead line construction materials
- ▶ Cable Connectors, Sleeves and Splices
- ▶ Formed wire Products
- ▶ Earth Grounding Devices
- ▶ Protective Switching Devices and Fuses
- ▶ Meter & Metering Devices
- ▶ Tools and Testers
- ▶ Fittings Enclosures and Boxes
- ▶ Up to 33KV Oil and Vacuum Indoor and Outdoor Switchgear and Controls
- ▶ 380/550v Air Circuit Breaker Switchgear and Controls
- ▶ Diesel powered emergency Generators
- ▶ Electric Overhead Transportation Cranes (up to 15 Tonnes)
- ▶ Motor Control Centers for 380V, 550V and 3.3KV induction motors
- ▶ 3.3KV and 11KV Distribution Transformers
- ▶ 3.3K and 11K Overhead Line Poles / Cross arms
- ▶ Power and Control Transformers
- ▶ Indoor and outdoor lighting systems
- ▶ Standby Battery Power Systems
- ▶ Substation Air Filter and Conditioning Units
- ▶ Air Conditioners, Refrigerant Gas Suppliers and Compressors

**WE PROVIDE
BEST SOLUTION**



CURRENT ORGANISATIONAL STRUCTURE



MISSION

Michlong limited is responsible to customer needs through delivery of high quality product and services. This is made possible by highly motivated employees who share in the responsibility of our success.

VISION

Michlong Limited will become a regional provider of engineering products and services. Our success will come through proactively approaching our customers to help them identify their needs. We accomplish this by having a staff that consistently puts the customer first, seek expertise and aggressively pursue profitable work. We will acquire and retain staff by developing an environment that rewards passion, success and integrity.

GOALS & OBJECTIVES

To provide our clients with quality products and meet exact standards at competitive prices, An efficient delivery service ensuring delivery by promised date is ensured.



QUALITY ASSURANCE POLICY

All employees are committed to maintaining and improving our Quality Management System to satisfy internal and external customers to comply with regulatory requirements and ensure the financial success of the Company.

CUSTOMER PHILOSOPHY

Michlong Limited The customer makes rules and we follow, though where need be, we do provide free technical advice on how best we can achieve the customer`s desired results. We do not only look at the supply and provide of goods and services, but we also stretch beyond this scope by becoming trading partners to ensure a balanced satisfaction between ourselves and the dearest customer.

FINANCIAL PLAN

The Company wishes to use the accounting package which is already in place and work it in the financial model, pricing assumptions make budgets and work to control the variance to achieve the accuracy and present them in a true and fair manner.

We also wish to make the project of what will be achieved in the next three years in terms of expected sales and profits.

RESOURCE REQUIREMENTS

We wish to make our business to be efficient in its operations by moving side by side with our principles in the wake of new technology and maintain our goodwill with our current clients.As the Company grows we will need to increase the capital base.

SAFETY, HEALTH & ENVIRONMENTAL POLICY



It is our policy to provide our Quality products and services in a sustainable manner, while upholding the safety and Health of the workers and Environment. Building long term relationships with our clientele based on honesty, trust and maintaining high standards of professionalism in the dispensation of services.

Health and safety at work is a serious and everyone's concern and as such it is the duty of management and all staff to know and understand their roles and responsibilities, in particular:

- ▶ Know the company safety policy – organisation and arrangements.
- ▶ Employees must pass and possess the Occupational Health checks for positions requiring access to restricted or protected areas as per statutory requirements.
- ▶ Conduct induction training/ Mining safety training programmes.
- ▶ Conduct risk assessments for all projects undertaken.
- ▶ Issue and maintain Personal Protective Equipment [PPE] records for all employees.
- ▶ Conduct regular safety meetings and maintain safety records.
- ▶ Maintain First Aid Equipment.
- ▶ Maintain records of all company equipment.



CIVIL AND CONSTRUCTION WORKS

Michlong Limited has varsity experience which spans over a period of 7 years thus we are able to provide full range in professional engineering services throughout Zambia.

The company has its core business in civil construction works. The area of specialization includes among others the following;

- ▶ Brick wall fencing
- ▶ Concrete plinths and slabs
- ▶ Building constructions and renovations
- ▶ Civil construction and repairs
- ▶ General cleaning
- ▶ Skilled and unskilled labour provision

OUR STUFF

Michlong Limited has a rich reserve of experienced and qualified personnel in the fields of;

- ▶ Metal fabrication; Boiler making of structural steel structures e.g.: Platforms, Tanks, Hoppers, Walkway support structures
- ▶ Welding; specialized cold welding
- ▶ Sand blasting and painting
- ▶ Rigging
- ▶ Erection of fabricated structures
- ▶ Fitting
- ▶ Product research and procurement with comprehensive support in Human resource management and Information technology.



PRINCIPLE FIELD OF EXPERTISE

Michlong Limited has a rich reserve of experienced and qualified personnel in the fields of;

- ▶ Township infrastructure
- ▶ Urban development and management
- ▶ Housing projects
- ▶ Residential townships
- ▶ Civil Engineering services and site works for building projects.





ELECTRICAL INSTALLATION TEST EQUIPMENT SUPPLY

At Michlong Limited, smart performance is always with the shareholders in mind. The Company's major business is the supply and installation of engineering equipment to its customers done at the highest levels of international and operational standards.

The Company is committed inter alia, to the following:-

- ▶ Provide an attractive return to the shareholders.
- ▶ Aim to become the preferred and leading supplier of quality world class electrical equipment.
- ▶ Conduct business in the most professional, efficient and unique customer care manner.
- ▶ Optimize customer relationship through swift goods delivery, training support and team work.
- ▶ To be the best employer in its business line.
- ▶ To soar above the competitions through excellence and adherence to ethical conduct at all times.
- ▶ Maintain open communication with customers, suppliers, employees, the media and all stakeholders.
- ▶ To grow the Company sales, capacity and product range while maintaining a high standard of quality in all our products and services.
- ▶ Offering products and services that provide value for money promising only what we can deliver.
- ▶ Promoting the maintenance of environments where men and women work safely
- ▶ Adopt a responsible position in the community through corporate social responsibility programmes.

ELECTRICAL INSTALLATION TEST EQUIPMENT SUPPLY

PRODUCTS & SERVICES

- ▶ OVERHEAD LINE CONSTRUCTION MATERIALS
- ▶ ELECTRICAL INSTALLATION WIRING
- ▶ POWER AND CONTROL CAB CABLING AND RACKING INSTALLATION
- ▶ 11KV STRAIGHT THROUGH JOINTS FOR XLPE/PILE CABLES
- ▶ INSULATION TAPES – PVC& SCOTCH TAPE 23
- ▶ WIRING CABLES AND ACCESSORIES
- ▶ LED LIGHTING AND FITTINGS
- ▶ CABLE LUGS AND FERRULES
- ▶ DIP PROOFING INVERTERS
- ▶ CIRCUIT BREAKERS.
- ▶ TRANSFORMERS
- ▶ CABLE GLANDS
- ▶ RELAYS





SUPPLYING & CONTRACTING

FIRE SUPPRESSION

- ▶ SUPPLY AND INSTALLATION OF FIRE DETECTION SYSTEMS
- ▶ SUPPLY AND INSTALLATION OF FIRE SUPPRESSION SYSTEMS
- ▶ SUPPLY OF FIRE FIGHTING ACCESSORIES AND TOOLS





SUPPLYING & CONTRACTING

SUPPLY OF MECHANICAL PARTS

- ▶ WELDING ELECTRODES
- ▶ PROTECTIVE CLOTHING
- ▶ JACK HAMMERS
- ▶ BALL MILLS
- ▶ BEARINGS
- ▶ VALVES
- ▶ PUMPS
- ▶ LINERS



A large industrial pump assembly with a blue motor and yellow control box, mounted on a metal frame.

SUPPLYING & CONTRACTING

PUMPS & BACKUP SPARES

SUPPLIERS OF THE FOLLOWING BRANDS OF PUMPS, INCLUDING
BACKUP SPARES:

- ▶ CENTRIFUGAL WEIR SLURRY PUMPS
- ▶ VARIOUS TYPE OF GLAND PACKING'S
- ▶ CENTRIFUGAL HARLAND PUMPS
- ▶ SUBMERSIBLE PUMPS
- ▶ CHEMICAL PUMPS
- ▶ DOSING PUMPS





SUPPLYING & CONTRACTING INSTRUMENTATION SERVICES

INSTALLATION AND SUPPLIERS OF THE FOLLOWING INSTRUMENTS:

- ▶ TEMPERATURE MEASURING INSTRUMENTS
- ▶ VARIABLE SPEED DRIVES(VSD)
- ▶ SOLENOID VALVES
- ▶ PRESSURE GAUGES
- ▶ DISTANCE METERS





SUPPLYING & CONTRACTING

INFORMATION

TECHNOLOGY EQUIPMENT

- ▶ PRINTERS – LASER JETS, OFFICE JET, DESIGN JET AND INK JETS
- ▶ DESK TOP COMPUTERS
- ▶ PERSONAL COMPUTERS
- ▶ LAPTOPS
- ▶ SCANNERS
- ▶ LCD PROJECTORS
- ▶ UPS



COMPUTER ACCESSORIES:



- ▶ INSTALLATION OF OPERATING SYSTEMS & APPLICATION SOFTWARE'S
- ▶ INSTALLATION OF HARDWARE & PERIPHERAL DEVICES
- ▶ INSTALLATION OF NETWORKS (LANS AND WANS)




**Thanks for
your support**

Get in touch

 +260 966 837539 | +260 977 837539

 www.michlong.com
 sales@michlong.com
info@michlong.com
michlonglimited@gmail.com

 Post Office Building
Suite 110, Matuka Avenue
Kitwe - Zambia

Plot# 8 Gardenia Road Avondale
Off Great East Road, Lusaka

Designed by ScarIT [0973 197 297]